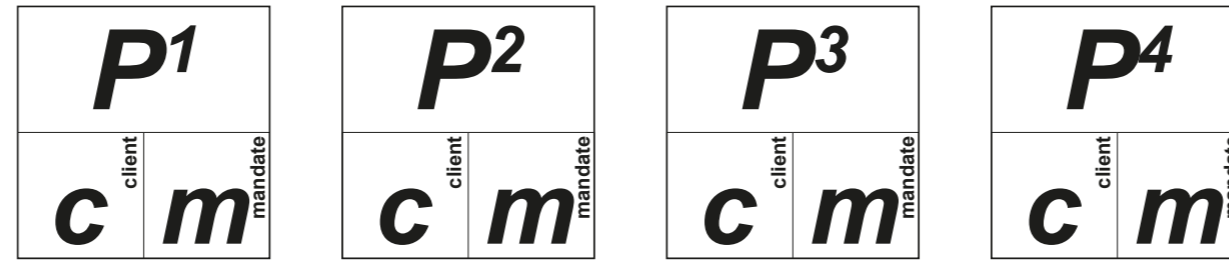
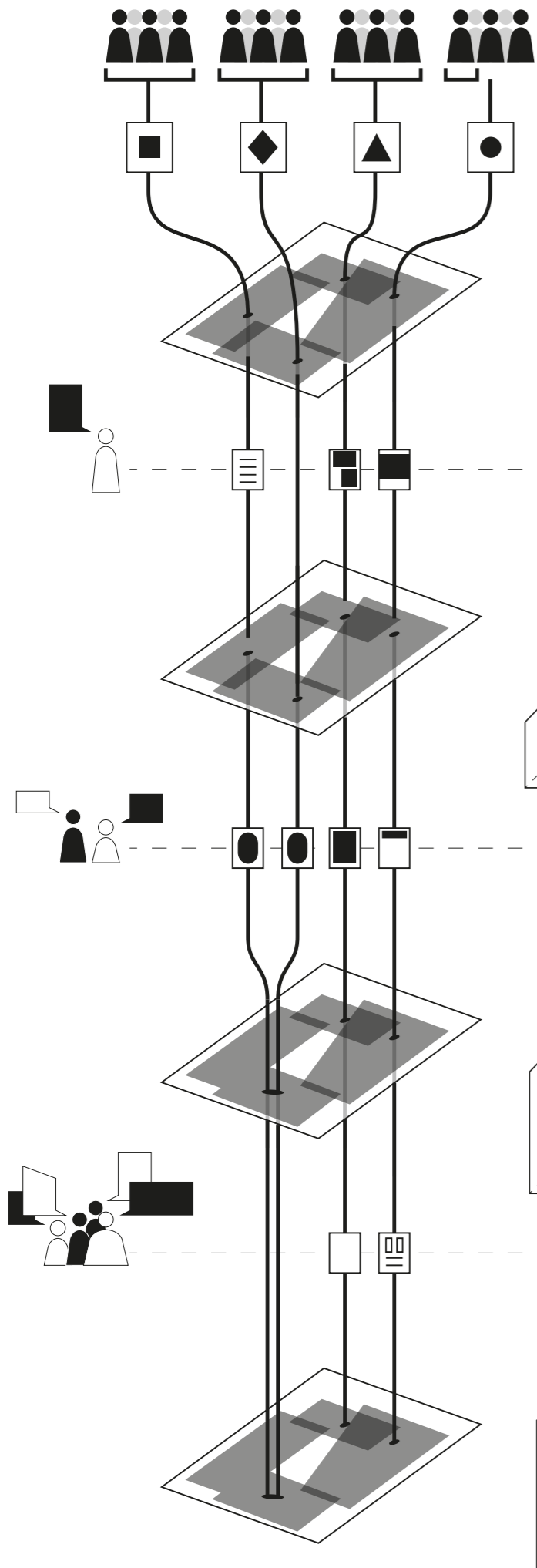
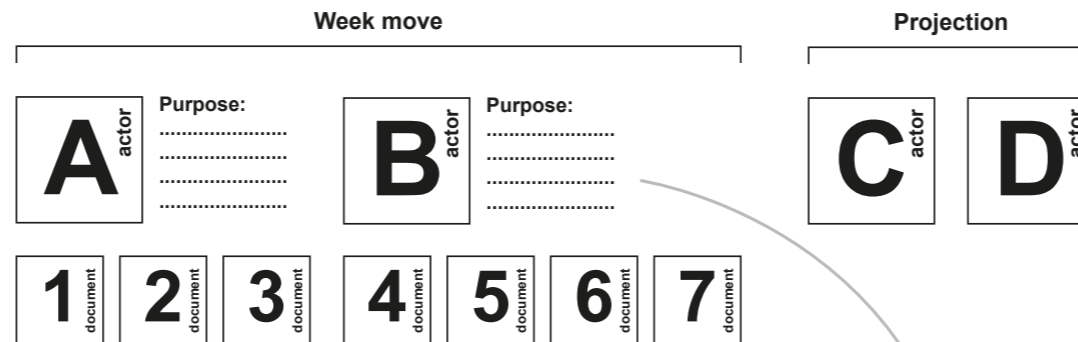


# the great game

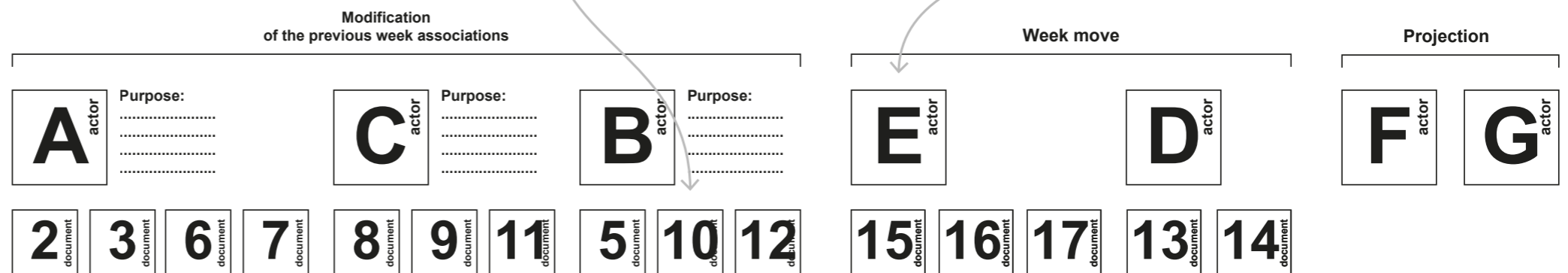
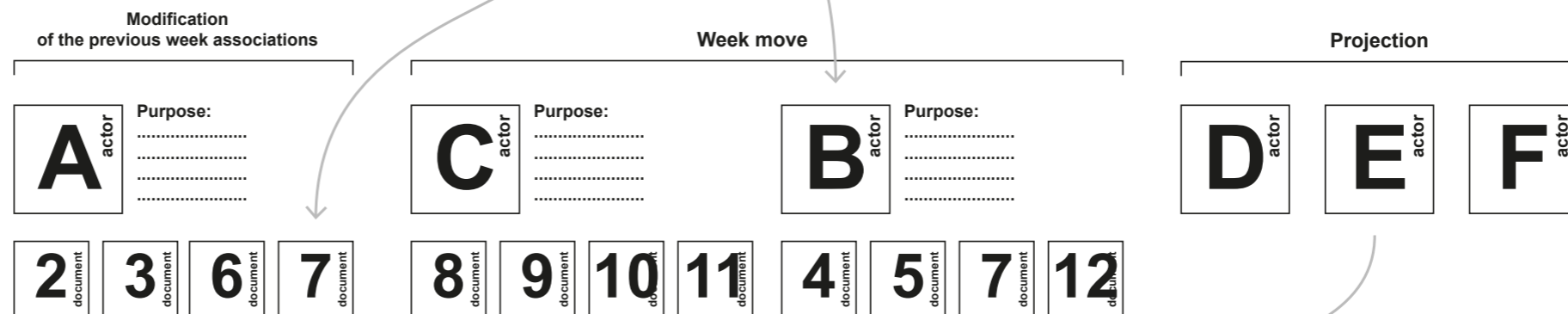


**Perspective:**  
the overall strategy is tied to a specific perspective consisting of a real client and a plausible mandate; each perspective is different and sometimes contradictory to the others.



**Week move:**  
identify the actors according to the purpose of the move, associate and produce the needed documents to achieve the propuses according to the specific actors

**Projection:**  
identify all the actors necessary for the complete implementation of the mandated project



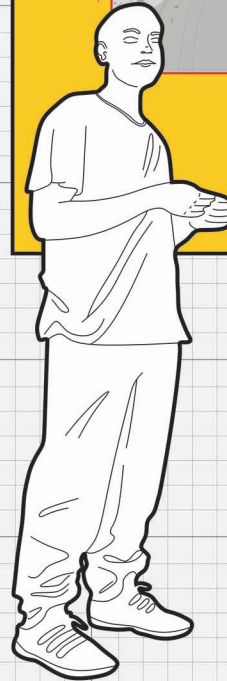




- GA** The historic and artistic heritage conservation office in Kiruna has enlisted an architectural firm to create a development plan that outlines the relocation of significant buildings such as the fire station within the area of Kiruna slated for demolition.
- GB** A small developer has acquired three parcels of land in old Kiruna with the intention of establishing commercial enterprises that could revitalize the old town once the city center relocates to New Kiruna.
- GC** A big developer is currently examining the Middnattsolstigen mountain area and its surroundings with the intention of creating a new sports and entertainment district.
- GD** The Cultural Office has commissioned a team of architects to develop a proposal for Kiruna as the Capital of Culture in 2029.
- GE** The public agency, Public Housing Sweden, has tasked a team of architects with designing a variation of the official masterplan that increase the density of residential areas while preserving a high quality of life, including green spaces and services.
- GF** LKAB has tasked a team of architects with putting forth a reforestation project for Kiruna that aligns with the city's adopted Masterplan for its future development.
- GG** An environmental association asks a group of architects to design a new "diffuse museum" concerning the many environmental and cultural controversies that affect Kiruna and its future.
- GH** The Kiruna administration is eager to introduce a passenger train line, complete with a train station in the new part of town.
- GI** A nonprofit organization is keen to investigate the feasibility of recycling scrap materials from the buildings scheduled for demolition as part of the city's relocation initiative.
- GL** A citizens' association is making efforts to safeguard a historical neighborhood that is slated for demolition.

The idea is intriguing, some of the partners you proposed are definitely less..

welcome to the Kiruna new diffuse museum, environmentally conscious and community-centric



**Calling all Sami artists and craftsmen!**

Join our competition to design the Sami pavilion exhibition and showcase your talent!

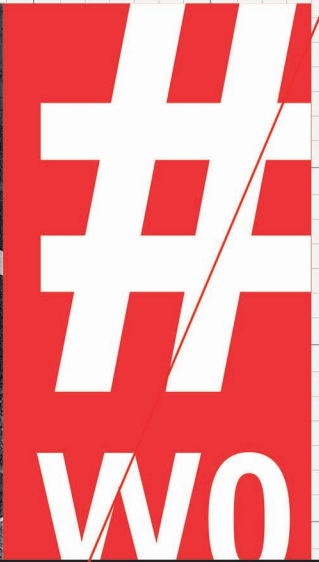
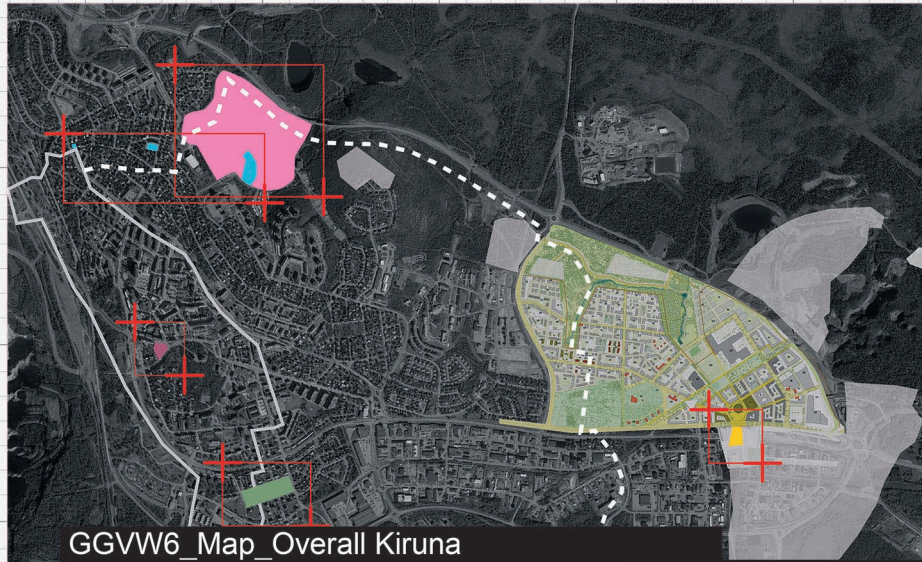
The community event hosted by Kiruna Municipality.

A unique opportunity to build the history of Kiruna together!

FREE REGISTRATION  
XX/XX/XXXX-XX/XX/XXXX

EXHIBITION DATE  
XX/XX/XXXX

Kiruna municipality, Environmental association



GGVW6\_Map\_Overall Kiruna

GDW5\_Doc\_Call

**Calling All Architectural Groups: Share Your Cultural Development Projects!**

Our firm is dedicated to contributing to the cultural development of Kiruna, and we believe collaboration is the key to achieving this goal. We are seeking your innovative projects that have the potential to enhance the cultural quality of this city.

If your architectural group has undertaken projects that can help cultural growth of Kiruna that can help being the city of culture of 2029, we invite you to share your insights and experiences. Your valuable input will help us identify opportunities for development and inspiration to create a positive cultural move.

**Nice idea, it perfectly fit our call for projects! Have a look at it**

GBW6\_Doc\_Concept

The playgrounds should cater to diverse age groups and adhere to the safety standards in Sweden.

Our aim is to create a space that not only promotes physical activity but also fosters community interaction and enjoyment.

**refused**

Intresting! Our client could fund this project...Can we discuss better on this LKAB pavillion? It can easily interact with our idea!



**we can work together!**

GDW7\_Doc\_Concept

**Kiruna 2029**

**Where is Kiruna?**

Kiruna is a town in northern Sweden, known for having the world's largest underground iron mine operated by LKAB. The town is undergoing a significant urban transformation due to mining-related substances, involving the relocation of buildings to a safer area. Kiruna's

**City of culture**

Becoming the European capital of culture has a drastic positive impact on the city of Kiruna as well as the people living there. Considering the special place that Kiruna is going through this should be seen as a great opportunity to keep creativity and culture at the heart of this development. This programme is designed in a way that can drive positive economic and social outcomes, develop lasting local, national and international connections.

**The design process**

To move towards having the most suitable plan for improving Kiruna we started with many general ideas in different aspects. Yet after diving deep into the Kiruna's environmental and cultural situation we ended up having some starting points. While keeping an open mind and educating ourselves we developed some ideas that were practical. In order to have the final plan we decided to work on this project in two phases.

**Kiruna in layers.**

Along with the phases, our main approach towards achieving this goal is "developing Kiruna in layers". With this perspective we could manage the project more efficiently as well as having a more profound outlook towards the city and its current situation. By this way of looking at the city we developed city in different layers.

**Layer 1**

In collaboration with the winning architectural firm, White, in this phase we focus on developing the city along with the plans already provided in the master plan. Meanwhile, we also try to emphasize on the cultural aspects and try to improve the cultural qualities in the city, such as the idea of "city sized park".

**Layer 2**

In this phase we plan on adding more spaces to the city since we realized that there are not enough social-cultural spaces of gathering for people. In this phase we not only focus on adding built spaces but also plan on fostering events, courses and also workshops for the people.

**Layer 3**

And the last phase of developing the city is to explore and enjoy the changes that have happened throughout the city. In this phase we not only put our plans into use but also let the people decide if there should be any changes or if anything can remain permanent.

**EUROPEAN CAPITAL OF CULTURE**

**GA ARCHITECTS**  
gaarchitects.com